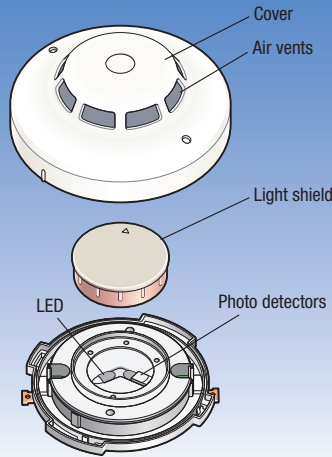


What is Spot Type Photoelectric Smoke Detector?



SLV-□RL



This is the detector.

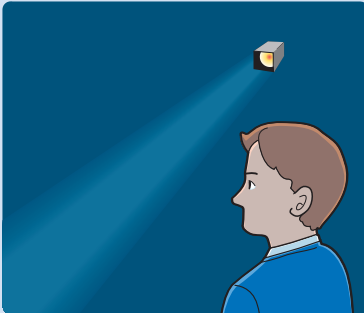
A detector that is activated by the change in amount of light received by the photo receptors, triggering a fire alarm when the surrounding concentration of smoke exceeds a pre-determined value. There are Type 1, Type 2 and Type 3 with different sensitivities.

Suitable for these places.

- Offices and living spaces etc.
- Corridors, stairs, interior of elevator shafts etc.
- Atria, lecture halls etc.
- Underground walkways, windowless levels etc.

Mechanism of the Spot Type Photoelectric Smoke Detector

1. Lights up in the dark. Light cannot be seen when standing away from the light source.



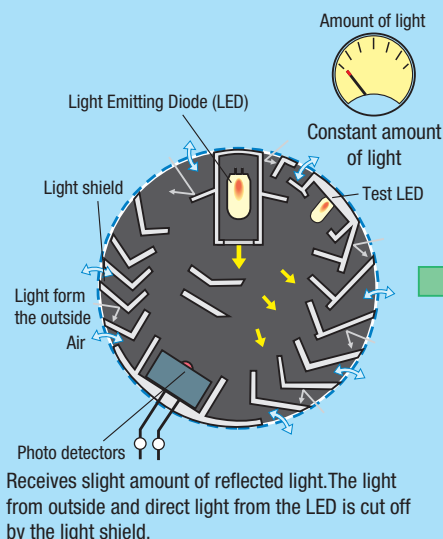
2. Introduce smoke.



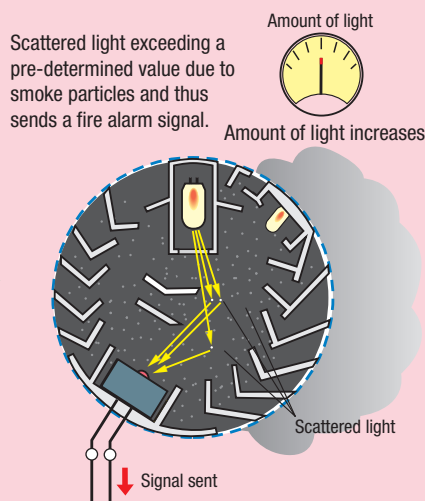
3. The scattered light of the smoke particles can be seen. Smoke is detected from this scattered light.



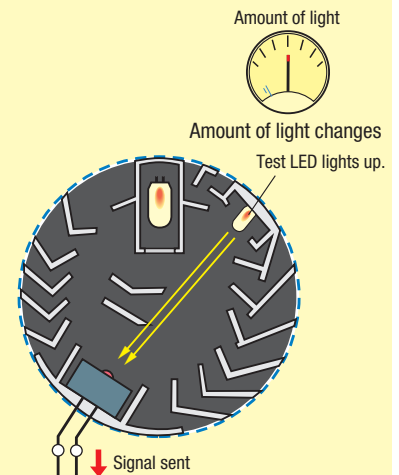
Normal conditions



During fire



During tests (with test function)



※The diagram above (smoke detection area) is for explanatory purposes. The actual detection area of the SLV-□RL is different.